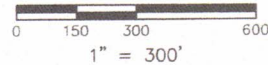


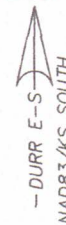
DURR ENGINEERING, LLC

SURVEYING, PLANNING, & DEVELOPMENT
525 HOWARD STREET
HUTCHINSON, KS 67501
PHONE: 620-663-9613

GRAPHIC SCALE
IN FEET



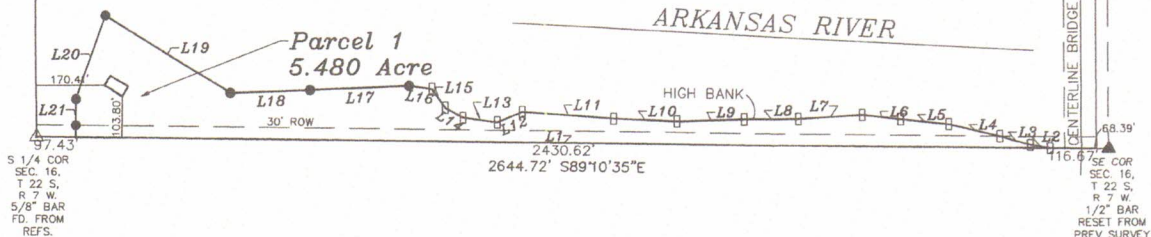
NORTH



5261.88' N0°07'41"W

Parcel Table			
Line #/Curve #	Length	Direction/Delta	Radius
L1	2430.622	S89° 10' 35.39"E	
L2	50.542	N79° 35' 17.67"W	
L3	74.020	N72° 58' 25.47"W	
L4	135.676	N76° 30' 35.61"W	
L5	120.901	N83° 44' 08.14"W	
L6	96.315	N83° 27' 27.09"W	
L7	159.788	S86° 36' 43.22"W	
L8	135.112	S89° 45' 37.61"W	
L9	169.267	S88° 06' 02.05"W	
L10	157.834	N87° 26' 31.23"W	
L11	229.218	N85° 31' 04.30"W	

Parcel Table			
Line #/Curve #	Length	Direction/Delta	Radius
L12	67.148	S66° 59' 02.57"W	
L13	86.280	N82° 13' 42.83"W	
L14	50.784	N59° 58' 59.03"W	
L15	56.569	N36° 18' 21.27"W	
L16	57.926	N81° 49' 41.26"W	
L17	246.703	S87° 50' 16.53"W	
L18	198.037	S88° 05' 33.26"W	
L19	366.923	N57° 36' 39.27"W	
L20	223.168	S19° 27' 18.58"W	
L21	95.903	S0° 49' 24.61"W	

**LEGEND**

- △ SECTION CORNER FOUND
- ▲ SECTION CORNER SET
- 1/2" X 24" REBAR SET
- LATH SET

NOTES:

- 1) NO TITLE WORK PROVIDED TO SURVEYOR PRIOR TO SURVEY
- 2) SECTION CORNER TIES TO BE SENT TO COUNTY ENGINEER'S OFFICE AND KANSAS STATE HISTORICAL SOCIETY

I, DUNCAN W. DURR, DO HEREBY CERTIFY THE
HEREON SURVEY TO BE A TRUE AND ACCURATE
REPRESENTATION OF THE CONDITIONS FOUND
ON THE DATE HEREON WRITTEN.



REGISTERED LAND SURVEYOR

CLIENT: BRUCE

DRAWN: DURR

PROJECT: 21162

SHEET: 1 OF: 1

A TRACT IN THE SOUTHEAST QUARTER, SOUTH OF THE ARKANSAS RIVER, IN SECTION 16, TOWNSHIP 22 SOUTH, RANGE 7 WEST OF THE SIXTH PRINCIPAL MERIDIAN, MORE PARTICULARLY DESCRIBED AS FOLLOWS:
COMMENCING AT THE SOUTHWEST CORNER OF SAID SOUTHEAST QUARTER; THENCE S89°10'35"E, ON SECTION LINE, A DISTANCE OF 97.43 FEET TO THE POINT OF BEGINNING; THENCE CONTINUING S89°10'35"E, A DISTANCE OF 2430.62 FEET TO THE INTERSECTION OF THE SOUTH SECTION LINE AND HIGH BANK OF ARKANSAS RIVER; THENCE N79°35'18"W, ON SAID HIGH BANK, A DISTANCE OF 50.54 FEET; THENCE N72°58'25"W, A DISTANCE OF 74.02 FEET; THENCE N76°30'36"W, A DISTANCE OF 135.68 FEET; THENCE N83°44'08"W, A DISTANCE OF 120.90 FEET; THENCE N83°27'27"W, A DISTANCE OF 96.31 FEET; THENCE S86°36'43"W, A DISTANCE OF 159.79 FEET; THENCE S89°45'38"W, A DISTANCE OF 135.11 FEET; THENCE S88°06'02"W, A DISTANCE OF 169.27 FEET; THENCE N87°26'31"W, A DISTANCE OF 157.83 FEET; THENCE N85°31'04"W, A DISTANCE OF 229.22 FEET; THENCE S66°59'03"W, A DISTANCE OF 67.15 FEET; THENCE N82°13'43"W, A DISTANCE OF 86.28 FEET; THENCE N59°58'59"W, A DISTANCE OF 50.78 FEET; THENCE N36°18'21"W, A DISTANCE OF 56.57 FEET; THENCE N81°49'41"W, A DISTANCE OF 57.93 FEET; THENCE LEAVING HIGH BANK, S87°50'17"W, A DISTANCE OF 246.70 FEET; THENCE S88°05'33"W, A DISTANCE OF 198.04 FEET; THENCE N57°36'39"W, A DISTANCE OF 366.92 FEET; THENCE S19°27'19"W, A DISTANCE OF 223.17 FEET; THENCE S0°49'25"W, A DISTANCE OF 95.90 FEET TO THE POINT OF BEGINNING; TRACT CONTAINS 5.480 ACRES, SUBJECT TO THE SOUTH 30 FEET FOR ROAD RIGHT OF WAY AND ANY OTHER EASEMENTS OF RECORD; ALL IN RENO COUNTY, KANSAS.

STATE: KANSAS

COUNTY: RENO

SEC: 16 TWP: 22 S R: 7 W

DATE: 12/21/2021